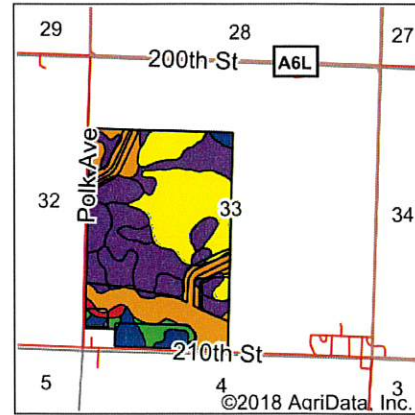
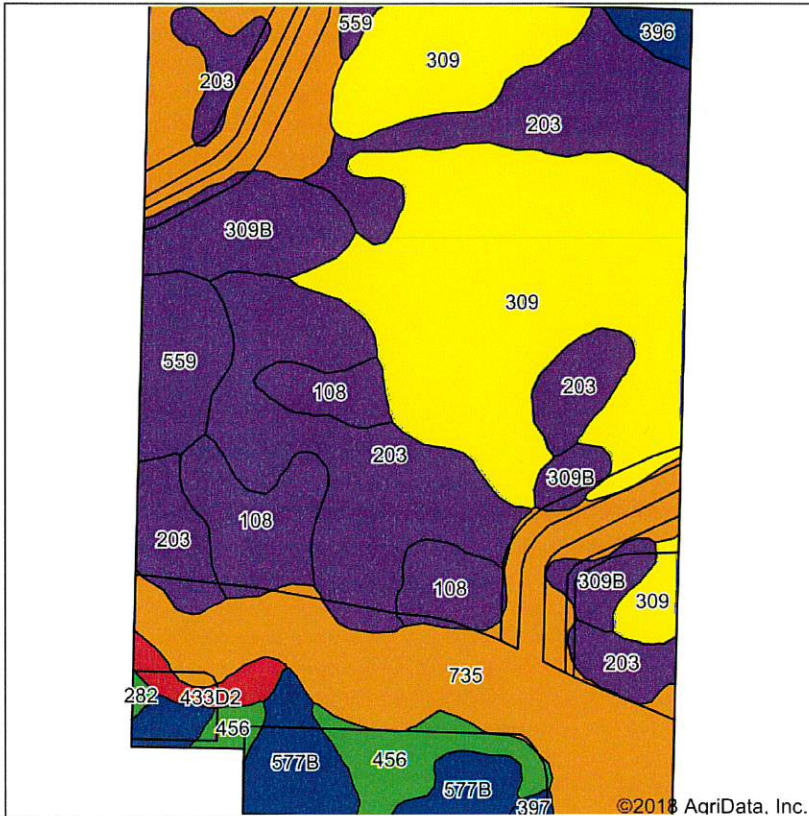














Soils Map



State: **Iowa**
 County: **Osceola**
 Location: **33-99N-41W**
 Township: **Holman**
 Acres: **233.5**
 Date: **4/11/2018**

Maps Provided By:  
 CUSTOMIZED ONLINE MAPPING
 © AgriData, Inc. 2018 www.AgridataInc.com

Soils data provided by USDA and NRCS.

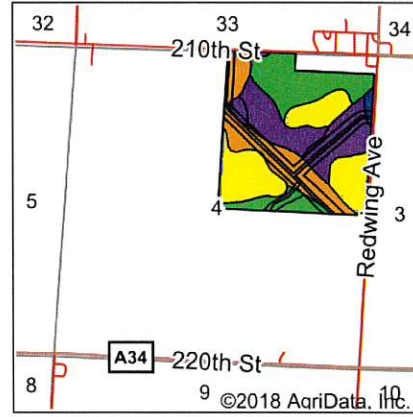
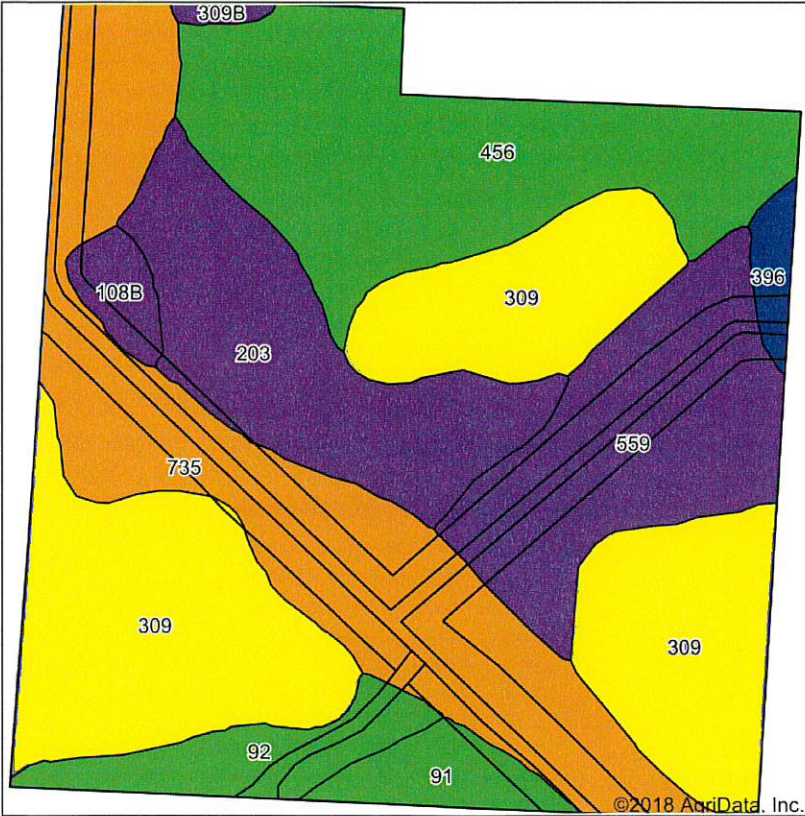
Area Symbol: IA143, Soil Area Version: 28							
Code	Soil Description	Acres	Percent of field	CSR2 Legend	Non-Irr Class *c	CSR2**	CSR
309	Allendorf silty clay loam, 0 to 2 percent slopes	63.00	27.0%		Ils	63	46
203	Cylinder loam, 0 to 2 percent slopes	56.18	24.1%		Ils	58	49
735	Havelock loam, 0 to 2 percent slopes, occasionally flooded	52.80	22.6%		Ilw	74	57
108	Wadena loam, 0 to 2 percent slopes	15.59	6.7%		Ils	56	47
309B	Allendorf silty clay loam, 2 to 5 percent slopes	13.97	6.0%		Ile	56	43
577B	Everly clay loam, 2 to 5 percent slopes	10.83	4.6%		Ile	90	72
559	Talcot silty clay loam, 0 to 2 percent slopes	8.25	3.5%		Ilw	54	40
456	Wilmington silty clay loam, 0 to 3 percent slopes	7.54	3.2%		Iw	91	78
433D2	Storden clay loam, 7 to 14 percent slopes, moderately eroded	2.57	1.1%		IIIe	36	18
396	Letri silty clay loam, calcareous, 0 to 2 percent slopes	1.83	0.8%		Ilw	89	72
397	Letri silty clay loam, 0 to 2 percent slopes	0.61	0.3%		Ilw	90	72
282	Ransom silty clay loam, 0 to 3 percent slopes	0.33	0.1%		Iw	95	82
Weighted Average						65.3	51.1

**IA has updated the CSR values for each county to CSR2.

*c: Using Capabilities Class Dominant Condition Aggregation Method

Soils data provided by USDA and NRCS.

Soils Map



State: **Iowa**
 County: **Osceola**
 Location: **4-98N-41W**
 Township: **Goewey**
 Acres: **153.66**
 Date: **4/11/2018**



Soils data provided by USDA and NRCS.

Area Symbol: IA143, Soil Area Version: 28

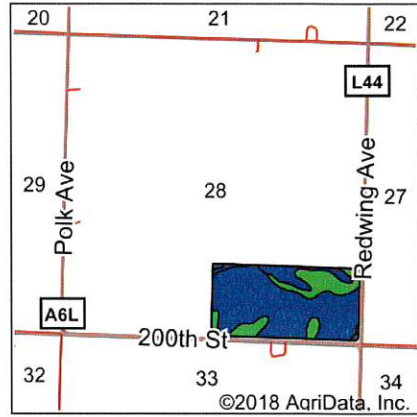
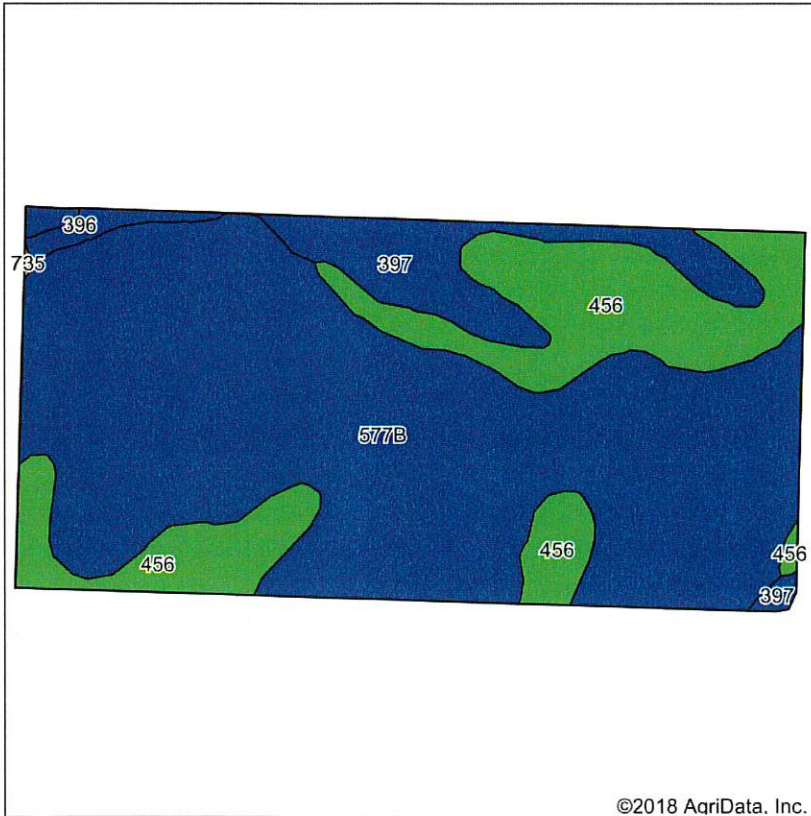
Code	Soil Description	Acres	Percent of field	CSR2 Legend	Non-Irr Class *c	CSR2**	CSR	Oats	Spring wheat
309	Allendorf silty clay loam, 0 to 2 percent slopes	43.79	28.5%		lls	63	46		
735	Havelock loam, 0 to 2 percent slopes, occasionally flooded	31.44	20.5%		llw	74	57		
456	Wilmington silty clay loam, 0 to 3 percent slopes	27.65	18.0%		lw	91	78		
559	Talcot silty clay loam, 0 to 2 percent slopes	18.50	12.0%		llw	54	40		
203	Cylinder loam, 0 to 2 percent slopes	18.12	11.8%		lls	58	49		
92	Marcus silty clay loam, 0 to 2 percent slopes	5.90	3.8%		llw	94	80		
91	Primghar silty clay loam, 0 to 2 percent slopes	3.78	2.5%		lw	100	86		
108B	Wadena loam, 2 to 6 percent slopes	2.27	1.5%		lle	52	41	4	2
396	Letri silty clay loam, calcareous, 0 to 2 percent slopes	1.65	1.1%		llw	89	72		
309B	Allendorf silty clay loam, 2 to 5 percent slopes	0.56	0.4%		lle	56	43		
Weighted Average						70.8	56.1	0.1	*-

**IA has updated the CSR values for each county to CSR2.

*c: Using Capabilities Class Dominant Condition Aggregation Method

Soils data provided by USDA and NRCS.

Soils Map



State: **Iowa**
 County: **Osceola**
 Location: **28-99N-41W**
 Township: **Holman**
 Acres: **75.65**
 Date: **4/11/2018**



Soils data provided by USDA and NRCS.

©2018 Agridata, Inc.

Area Symbol: IA143, Soil Area Version: 28							
Code	Soil Description	Acres	Percent of field	CSR2 Legend	Non-Irr Class *c	CSR2**	CSR
577B	Everly clay loam, 2 to 5 percent slopes	51.25	67.7%		Ile	90	72
456	Wilmington silty clay loam, 0 to 3 percent slopes	16.76	22.2%		Iw	91	78
397	Letri silty clay loam, 0 to 2 percent slopes	6.46	8.5%		Ilw	90	72
396	Letri silty clay loam, calcareous, 0 to 2 percent slopes	1.18	1.6%		Ilw	89	72
Weighted Average						90.2	73.3

**IA has updated the CSR values for each county to CSR2.

*c: Using Capabilities Class Dominant Condition Aggregation Method

Soils data provided by USDA and NRCS.